

## Minicrane Trax : The World's Most Versatile Lifting Machine



**Model:** Brandon Trax

**Hook Capacity:** 5,000 lbs

**Fork Capacity:** 1,500 lbs

**Glazier Capacity:** 1,400 lbs

**Robot or Jib Capacity:** 1,000 lbs

**Winch Capacity:** 3,000 lbs

**Reach:** Industry leading reach with below grade capability.

**Motor:** Propane-powered Kohler PCH740 Power-unit

**Weight:** 6,000 Lbs + Attachment



Radio Remote Controls

**Proportional Controls:** Electric Joystick for Proportional Lift and Extend. Includes 2-Speed HI/LOW switch for precise slow speed control.

**Boom:** Base unit, 2 telescoping booms and one manual pull-out boom. Attachments replace pull-out boom.

**Hydraulics:** Gear Pump with Load Sense Dump.

**Rated Load Limiter:** Displays rated load and actual load. Stops when rated load is reached. Detects which attachment is installed and automatically adjusts load parameters.

### Precise & Efficient Piston Pump

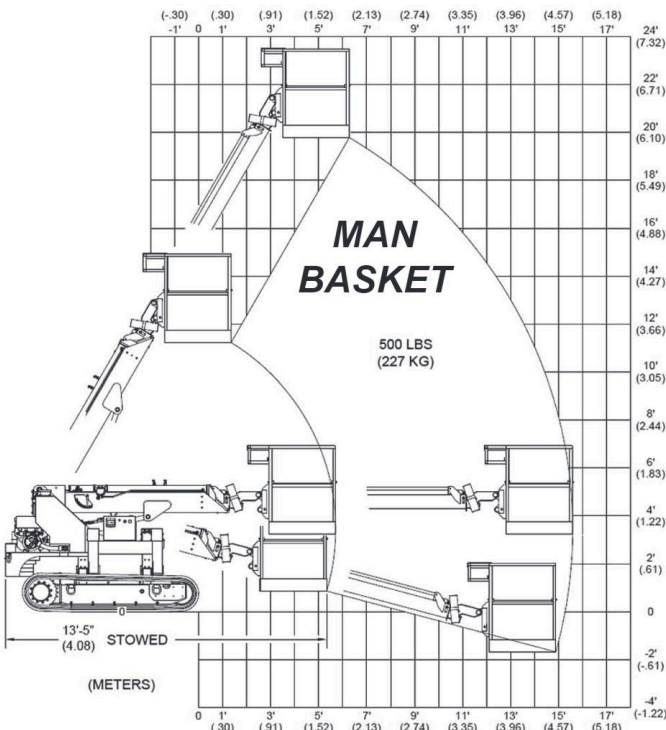
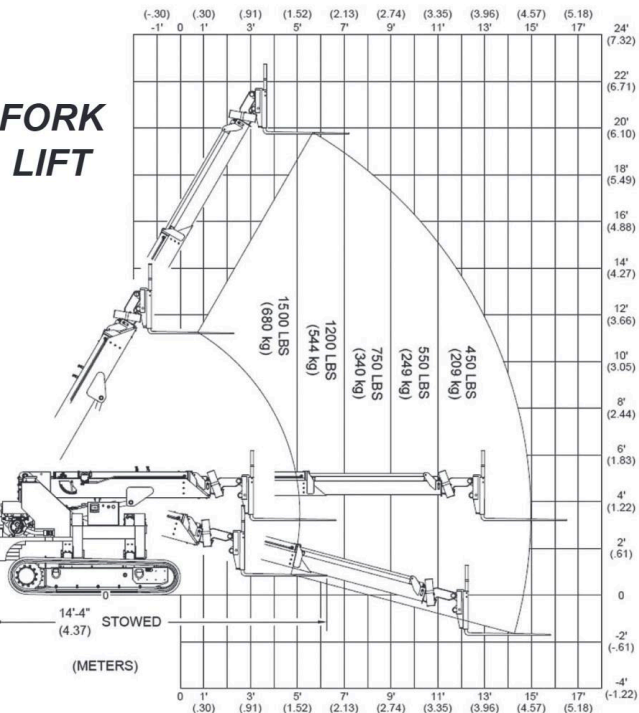
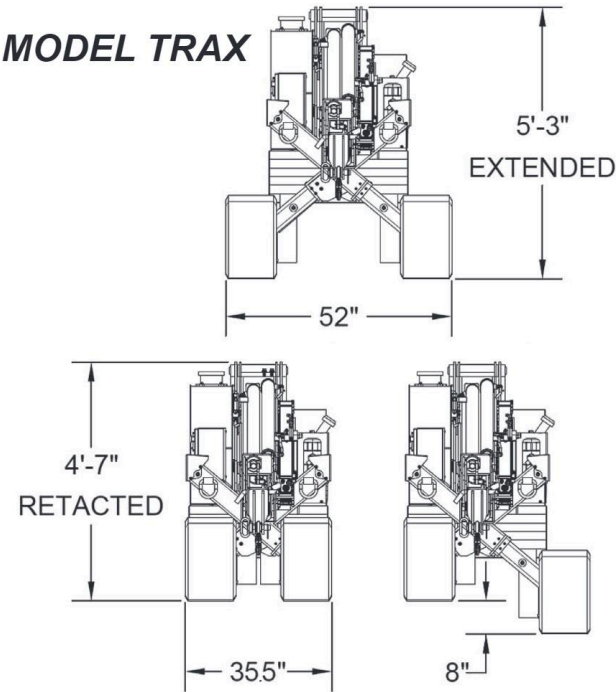
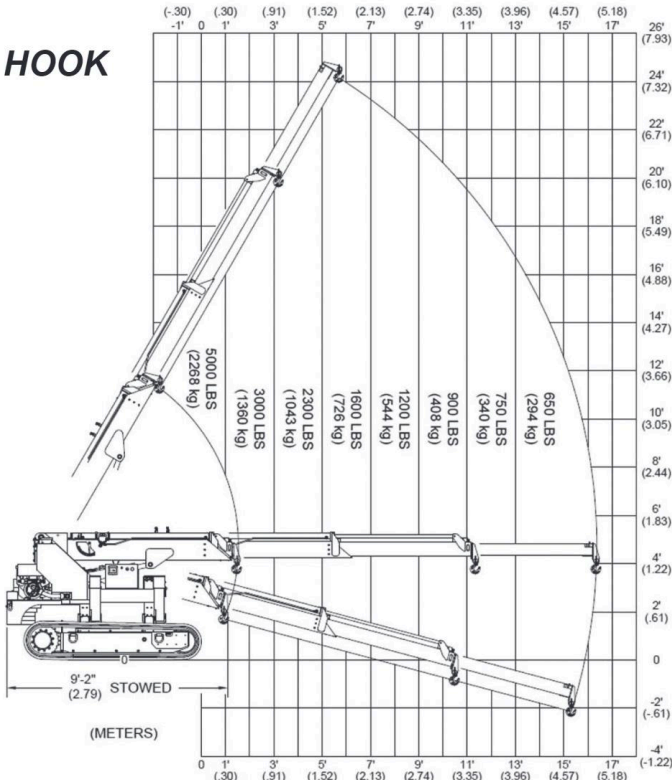
- Load Sensing
- Horsepower Limiting

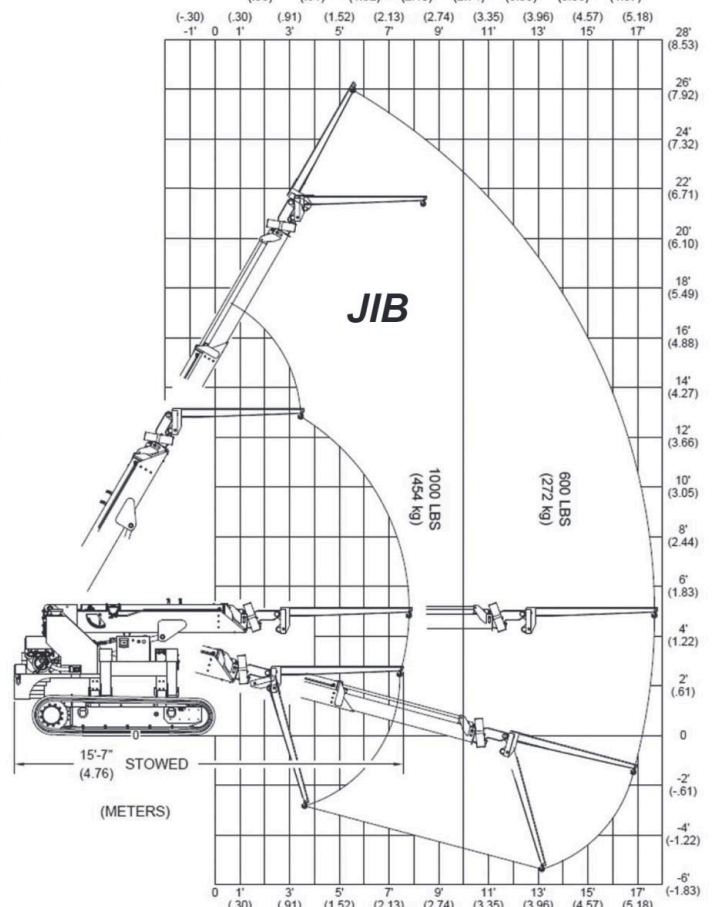
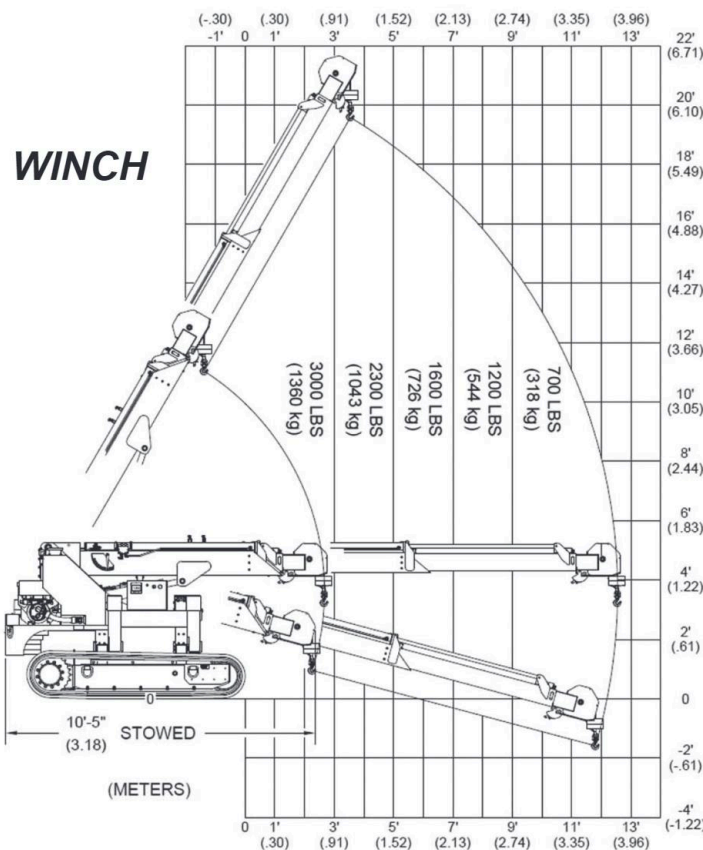
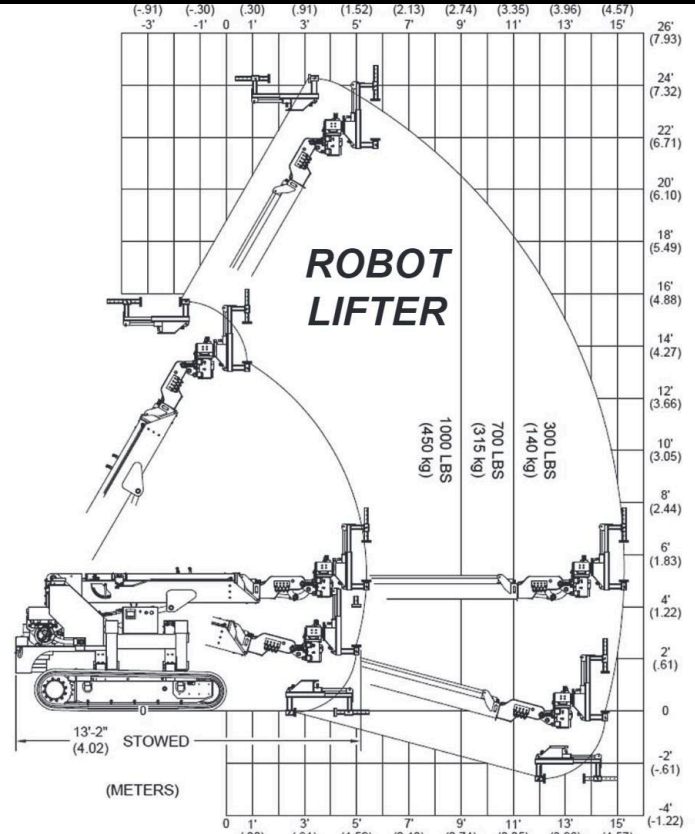
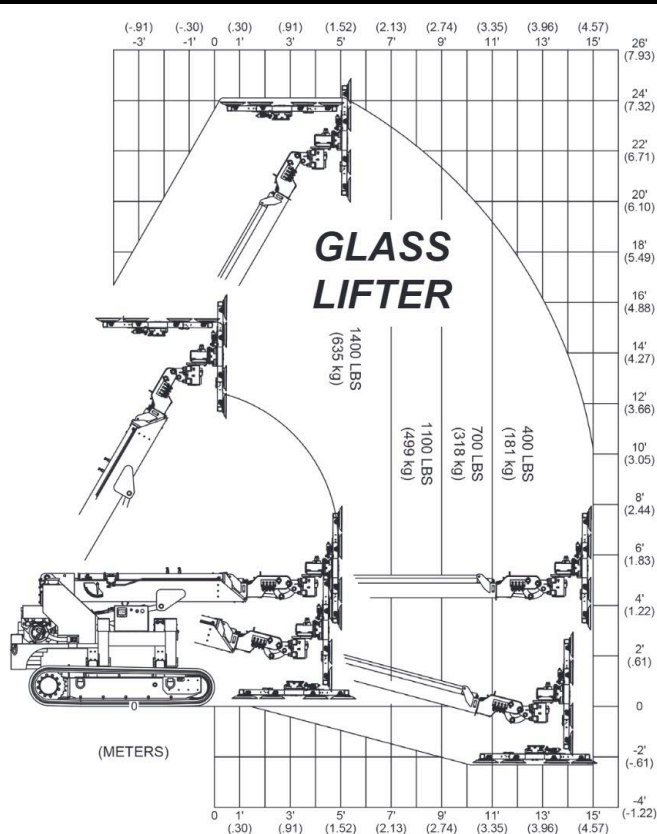
### Adjustable Tracks

- 8" of Vertical Slope Adjustment
- 35.5" Retracted - Single Door
- 52" Max Width for Stability
- No Outriggers Required
- Pick & Carry Full Capacity

LOAD CAPACITY CHARTS

\*\* MULTIPLE PATENTS PENDING \*\*







## Multiple Attachments



**Glass**



**Man Basket**



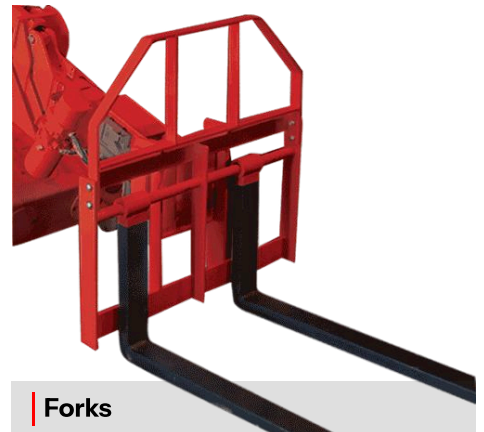
**Robot**



**Hanging Glass**



**Hoist Winch**



**Forks**

## Features



### **Rated Load Limiter**

Automatically detects attachment and adjusts loading parameters.



### **Propane-powered Kohler PCH740 Power-unit**

- 25 Net Horsepower
- Variable Speed Governor
- 3 Year Unlimited Hour Commercial Warranty



### **Independently Adjustable Tracks 8" of Vertical Slope Adjustment**