

MC Omni: The World's Most Versatile Lifting Machine



Model: Brandon Omni

Capacity: 4,000 lbs

Power: 36Volt 7HP Electric Motor

Steering: 2 Omni Directional Wheels

Drive: 2 Wheel Drive and Braking

Charger: On-board 110V

Weight: 5,800 Lbs + Attachment

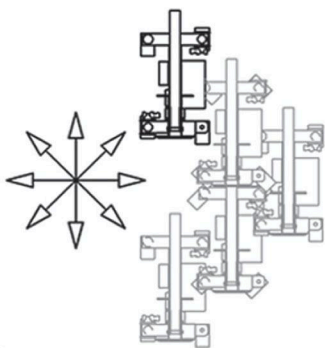
Boom: Base unit, 2 telescoping booms and one manual pull-out boom.

Attachments

replace pull-out boom.

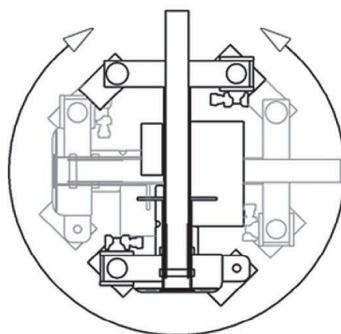
Rated Load Limiter: Displays rated load and actual load. Stops when overload is reached. Detects attachment and adjusts load parameters.

System Display: Includes Rated Load Limiter and system information.



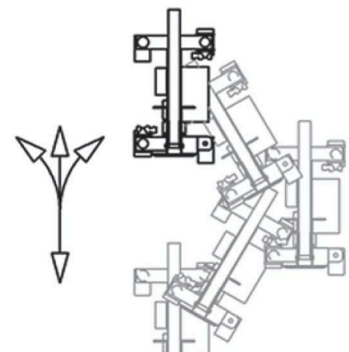
Two Wheel Steer

Typical front wheel steering like an automobile



Spin Steer

Wheels rotate to a position so
it rotates about its center

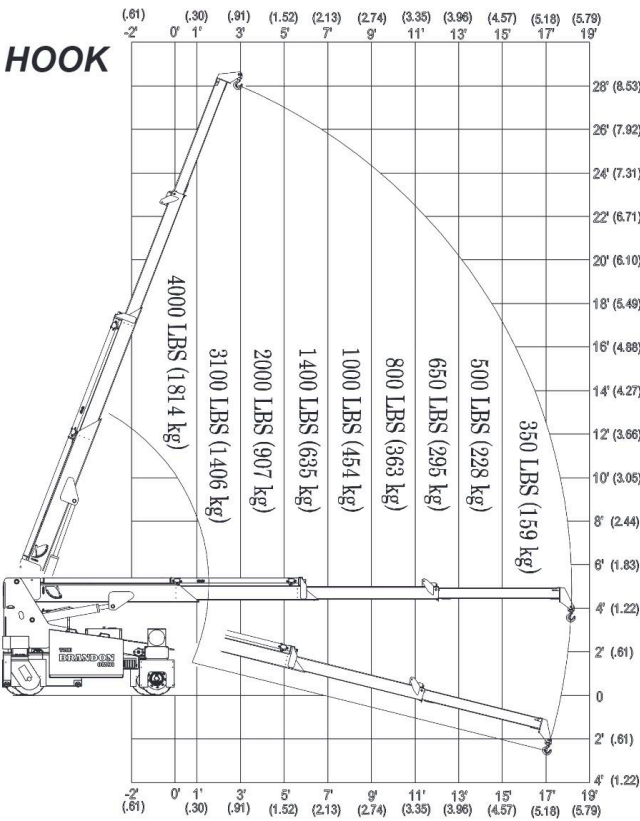


90. Crab Steer

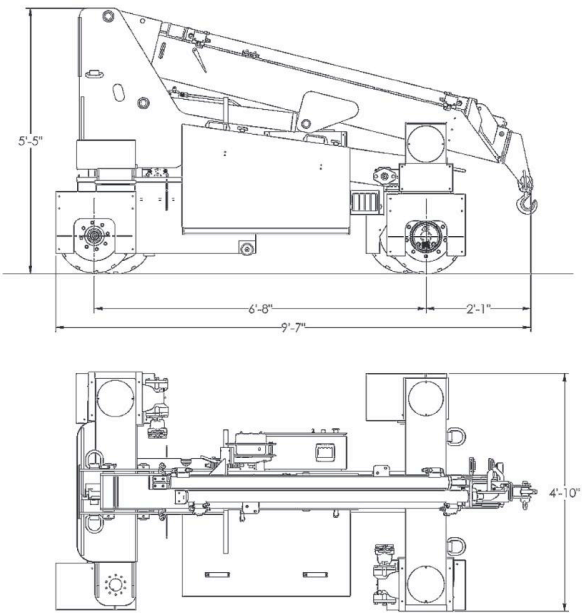
Wheels rotate 180° to provide sideways travel

LOAD CAPACITY CHARTS

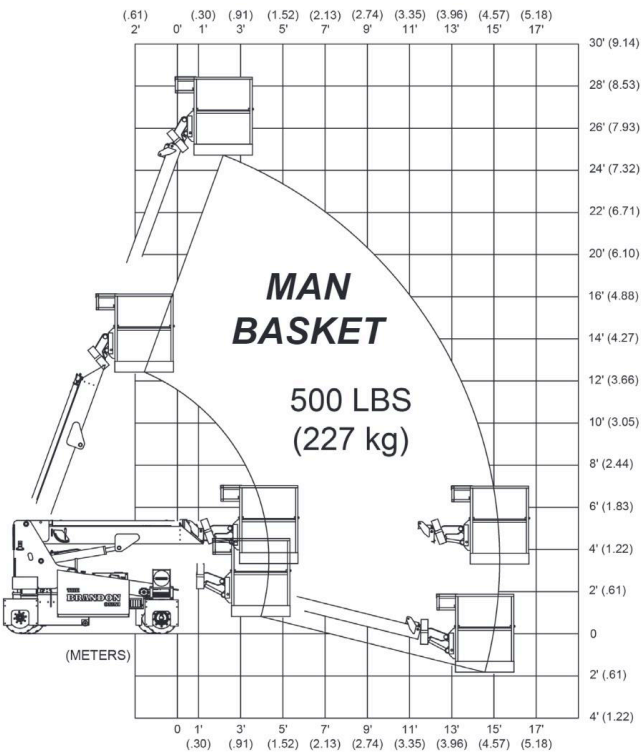
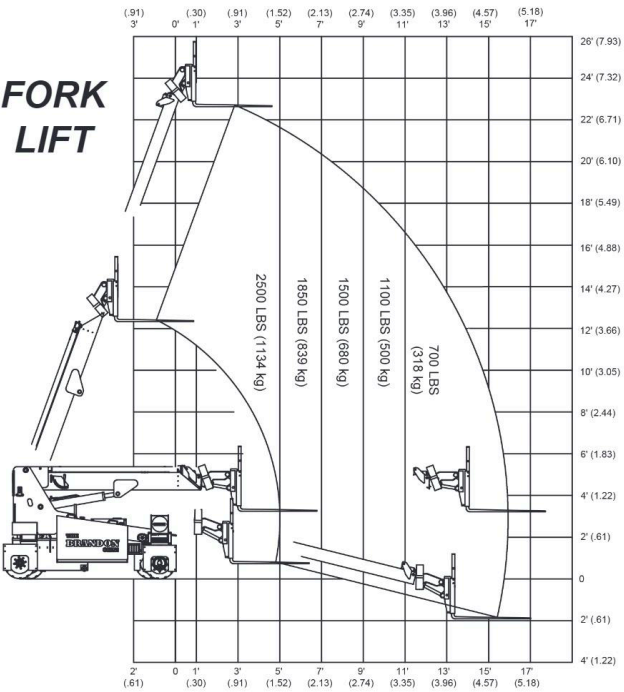
** MULTIPLE PATENTS PENDING **

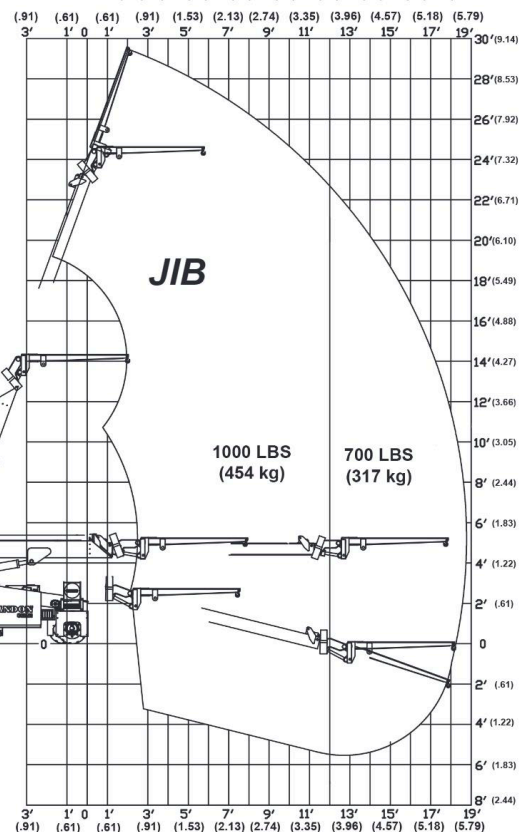
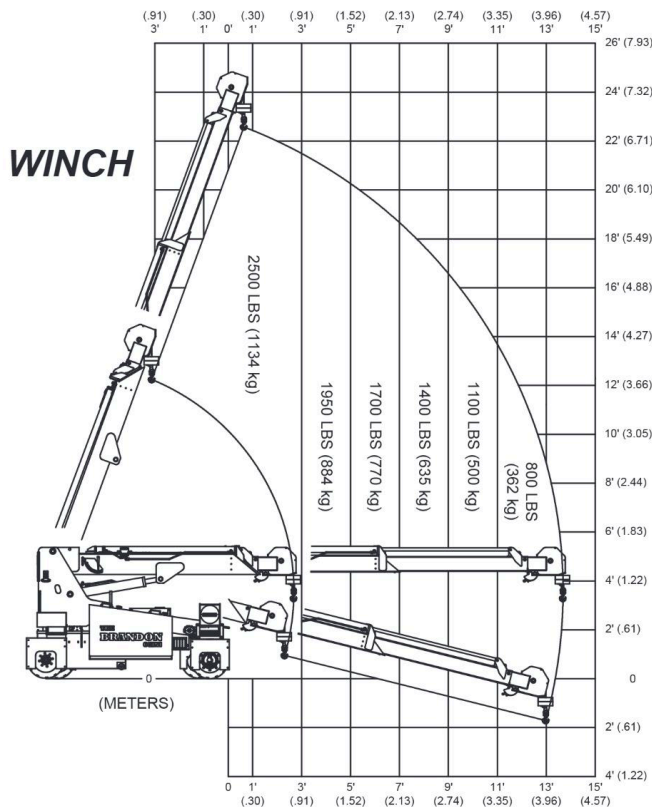
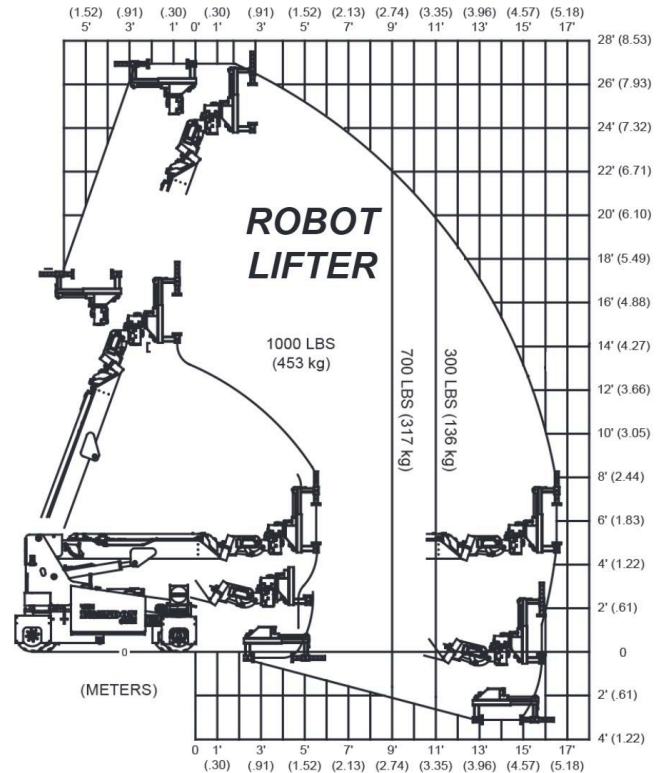
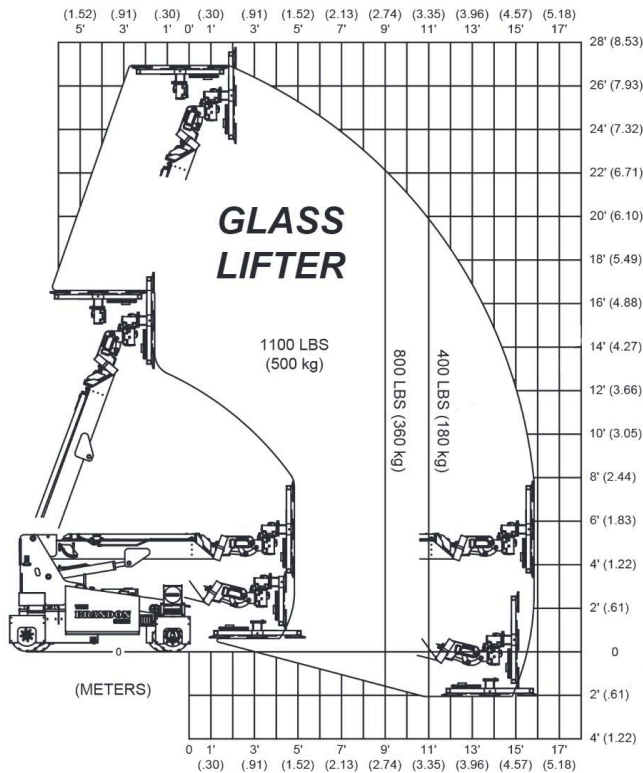


MODEL OMNI



**FORK
LIFT**





Multiple Attachments



Glass



Man Basket



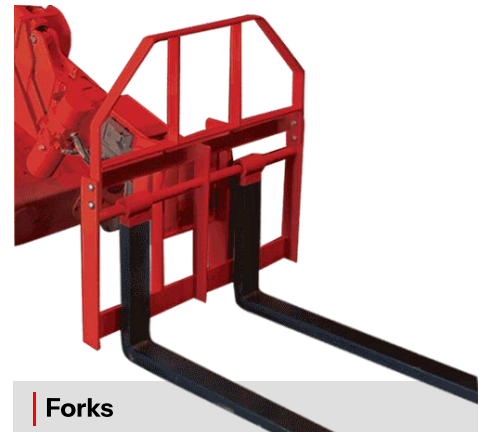
Robot



Hanging Glass



Hoist Winch



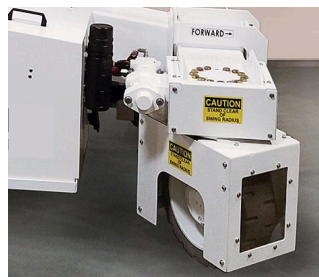
Forks

Features



Rated Load Limiter

Automatically detects attachment and adjusts loading parameters.



Wheel Covers

For safety and protection of the wheels



Removable Battery Box

For multi-shift operation.
Patented design loads without external sources.