

MC 10 : The World's Most Versatile Lifting Machine



Model: Brandon 10 (with Cab or No Cab)

Capacity: 10,200 lbs

Battery Power: 35 HP AC Motor

Steering: Omni Directional Wheels

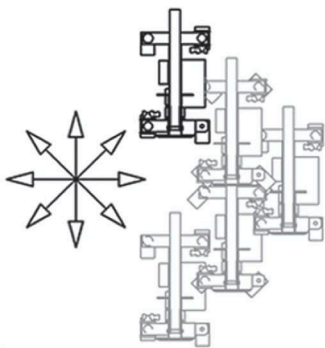
Drive: 2 Wheel Drive and Braking

Charger: On-board dual 110 Volts AC or
optional external 480 Volts 3 Phase

Weight: 10,500 Lbs + Attachment (with no cab)

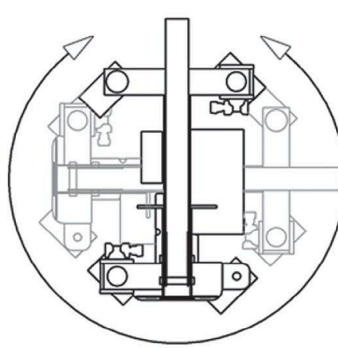
Boom: Base unit, 2 telescoping booms and one manual pull-out boom.
Attachments replace pull-out boom.

Rated Load Limiter: Displays rated load and actual load. Stops when
overload is reached. Detects attachment and adjusts load parameters.



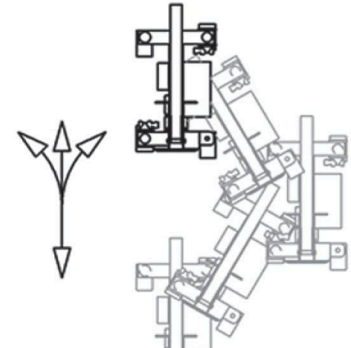
Two Wheel Steer

Typical front wheel steering like an automobile



Spin Steer

Wheels rotate to a position so
it rotates about its center

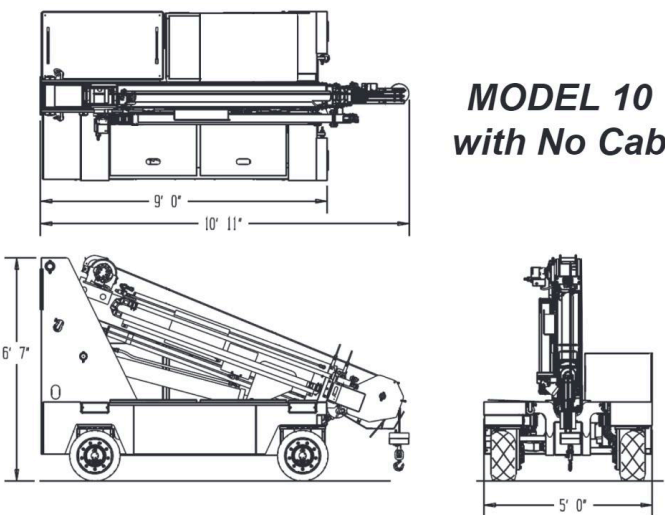
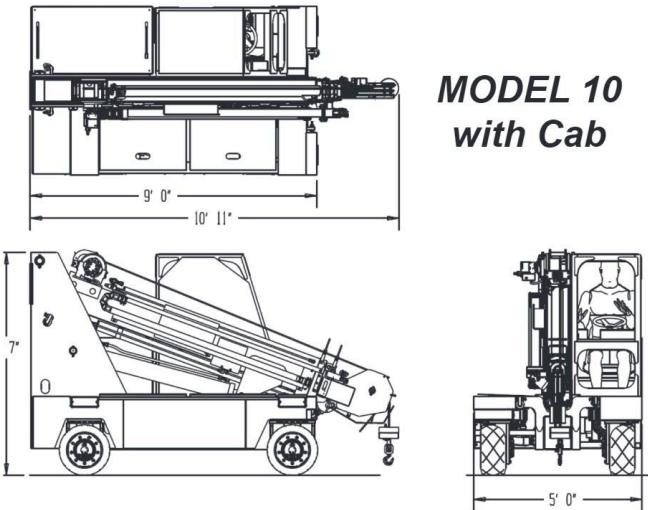


90. Crab Steer

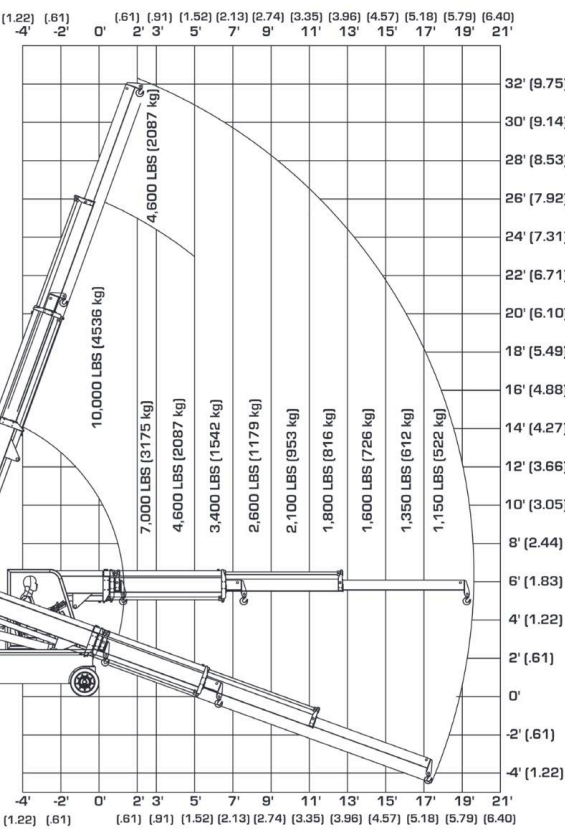
Wheels rotate 180° to provide sideways travel

LOAD CAPACITY CHARTS

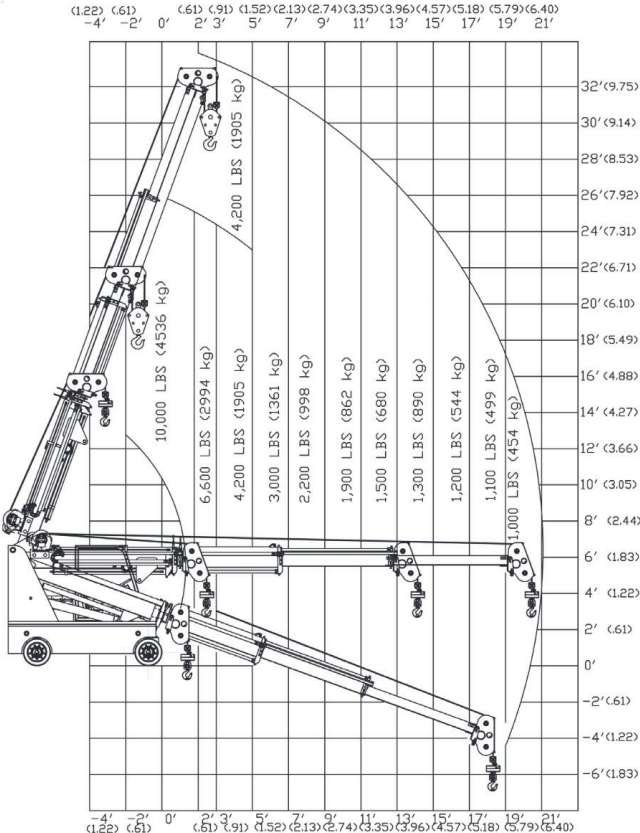
** MULTIPLE PATENTS PENDING**

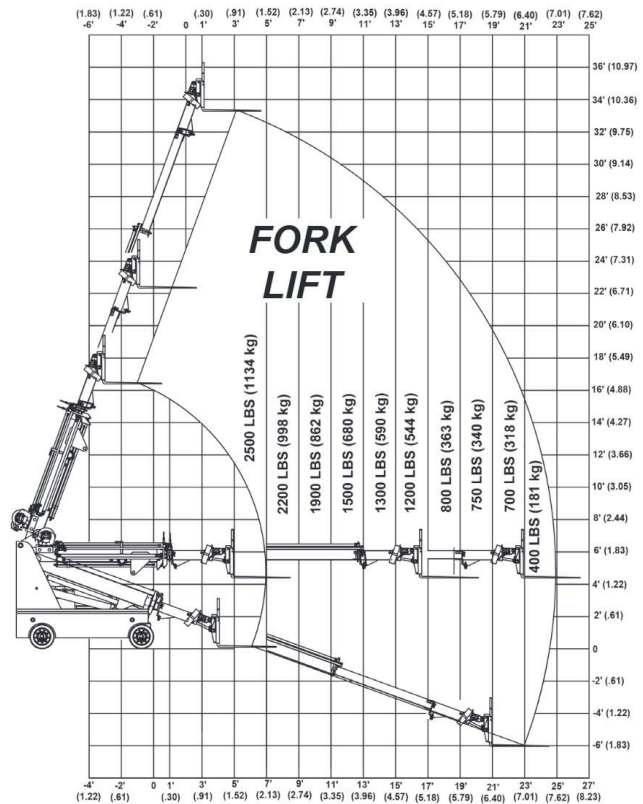
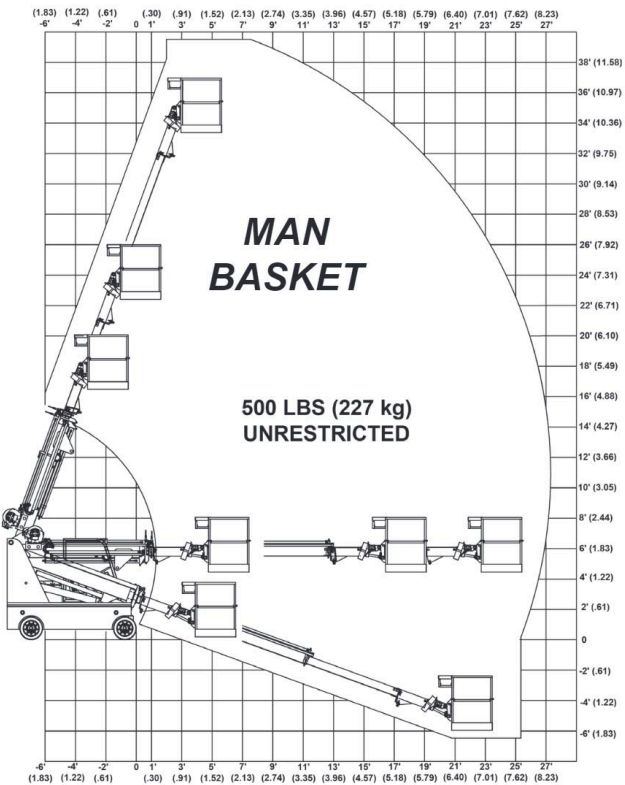
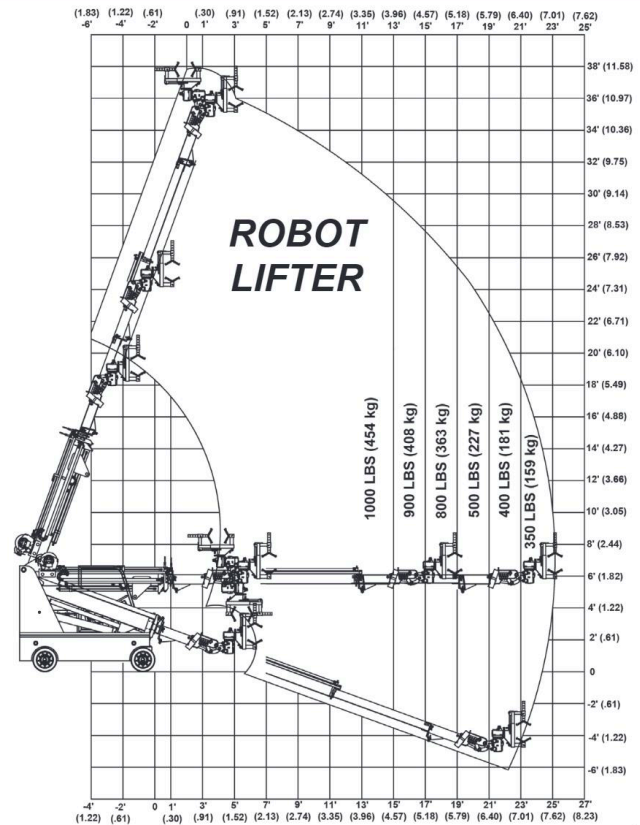
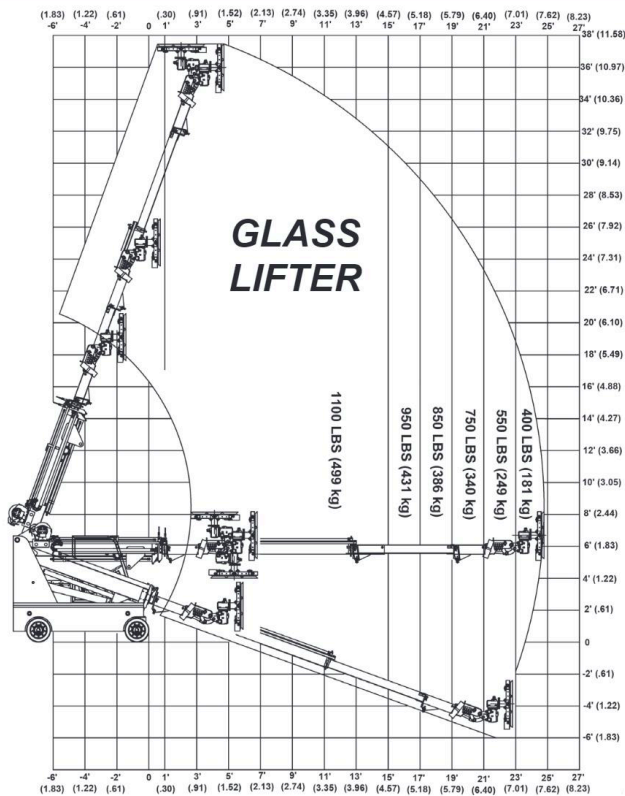


HOOK



WINCH





Multiple Attachments



Glass



Man Basket



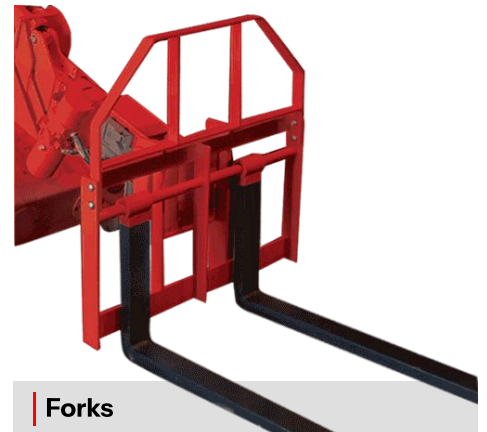
Robot



Hanging Glass



Hoist Winch



Forks

Features



Rated Load Limiter

Automatically detects attachment and adjusts loading parameters.



Radio Remote Controls